

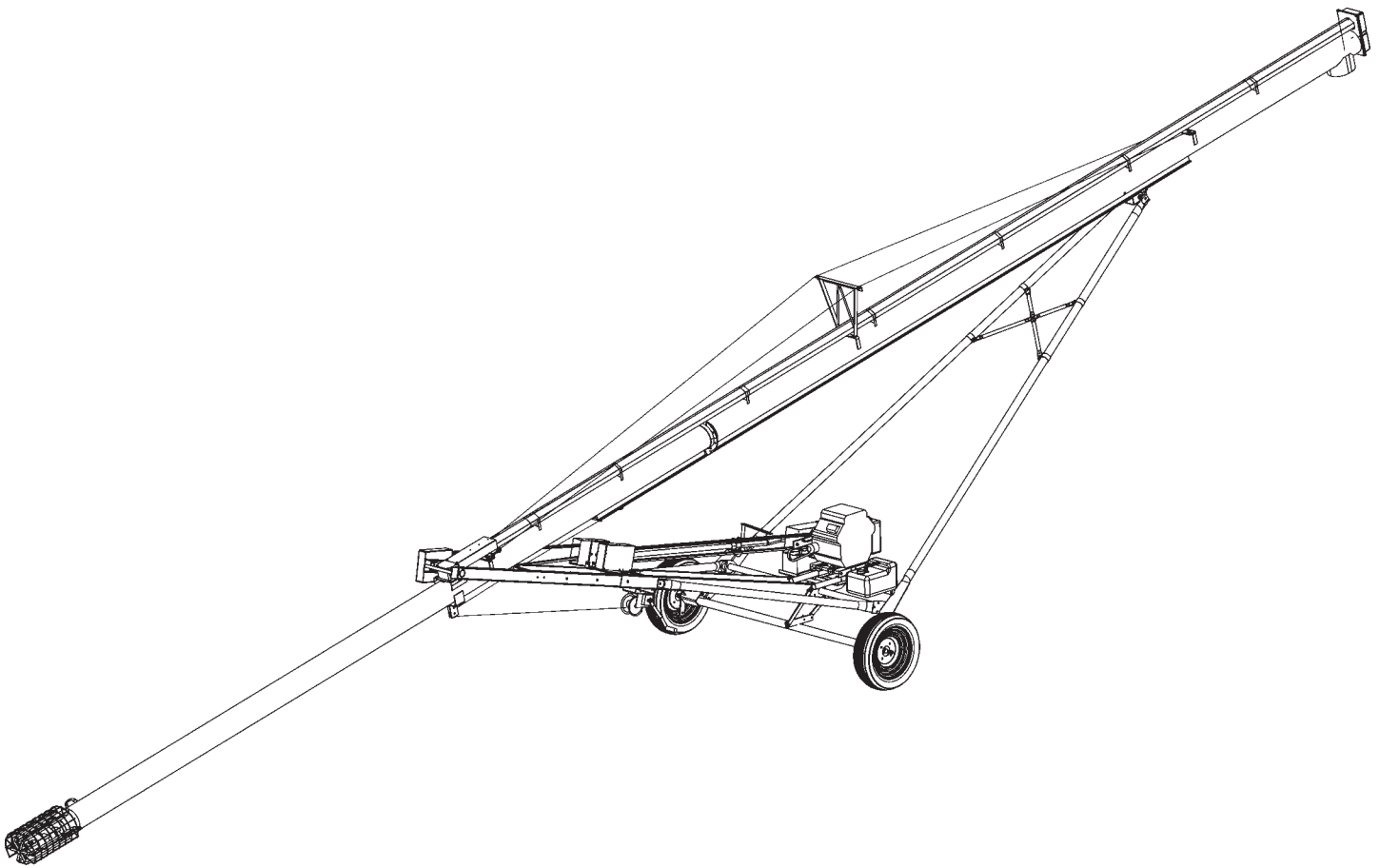
WESTFIELD[®]

GRAIN AUGERS

'TF' Series

Assembly & Operations Manual

Read and understand these instructions before assembling or operating.



TF-01-07



Watch for this symbol. It identifies potential hazards to health or personal safety. It points out safety precautions. It means: **ATTENTION - Be alert. Your safety is involved.**

Failure to read this auger manual before operating the auger is a misuse of the equipment and a needless risk of life and limb.



Table of Contents

1. Introduction	Page 1
2. Safety	2
3. Assembly	8
4. Transport.....	34
5. Placement	36
6. Operation	38
7. Maintenance & Storage	42
8. Index	45
Sign-Off Form	Inside Front Cover
Warranty	Inside Back Cover

1. Introduction

Congratulations. As the new owner of a WESTFIELD TF-Series Grain Auger, you will be working with equipment especially designed to complement and improve your farming operation. Before using this auger, we recommend that you read this manual and familiarize yourself with the various features of the machine and the necessary precautions for an efficient and safe

operation. In addition, we suggest that anyone using this auger be required as a matter of record to be familiar with all safety precautions. A sign-off form is supplied on the inside cover for your convenience and permanent records.

Thank you.



2. Safety First

Safety first! Everyone knows about it. Most people practise it. Sadly, few choose to ignore it. Safety should be a habit, something you practise every time you work with machinery. Safe working habits prevent needless accidents and needless injuries or deaths.

Whether you are the owner, a supervisor, or an operator, it is **your** responsibility to know the operational requirements, the safety precautions and the potential hazards of portable grain augers. Furthermore, you must

ensure that anyone working with or around the augers be familiar with them. Failure to read this manual and/or noncompliance with correct safety procedures is a misuse of equipment. Remember, a lack of knowledge serves only to endanger yourself and those around you.

TAKE THE TIME - An extra minute can matter.

BE ALERT - Carelessness is no excuse.

BE SAFE - Safety consciousness comes first.

2-1. OPERATIONAL SAFETY

Operational safety means using common sense. Moreover, it means knowing and observing proper precautions. Always remember to:

- Keep children and untrained people away from auger work area (see **Figure No. 2.1.1**). The area around an auger is not safe for untrained personnel, and especially not safe for children.
- Have another person nearby who can shut down the auger in case of accident. It is good practise to always work with a second person around augers.
- Inspect the lift cable before using auger. Replace if frayed or damaged.
- Make certain lift cable is properly seated in cable pulleys.
- Inspect the drive belt(s) before using auger. Replace if frayed or damaged.
- Ensure that auger is empty before raising or lowering.
- Ensure that winch is locked before operating auger.
- Augers are not insulated. Keep away from electrical lines. Electrocutation can occur without direct contact.
- If a gasoline engine is being used, remember to adequately ventilate area. Exhaust fumes in a closed area are deadly.
- Allow engine to cool before refueling (where applicable). A hot engine can cause a fire and serious injury.
- To refuel, use a poly plastic gas can with a flexible extended spout or a funnel to reduce possibility of spilling gas. Make certain gas can is properly vented.
- Make certain that the battery or terminal covers are in place and in good working order.
- If an electric motor is being used, remember to ground motor before using auger.
- Wear hearing protection when operating auger.
- **Do not operate auger with any safety shield removed.**
- Keep body, hair, and clothing away from moving parts.
- **Do not grab or touch** drive belt(s) during operation for any reason.
- Operate the auger on level ground free of debris. If ground is uneven, anchor the auger to prevent tipping or upending.
- Support the discharge end and/or anchor the intake end before operating to prevent upending.
- Shut off all power to auger before servicing, cleaning, or adjusting.
- Keep away from auger intake during operation.
- Lower auger at completion of operation, or when not in use.
- Never use a PTO driveline without a rotating shield in good working order (where applicable).
- Be certain the PTO driveline is securely attached to the jackshaft and to the tractor (where applicable).
- Before starting tractor, be certain that power to PTO is in the off position (where applicable).

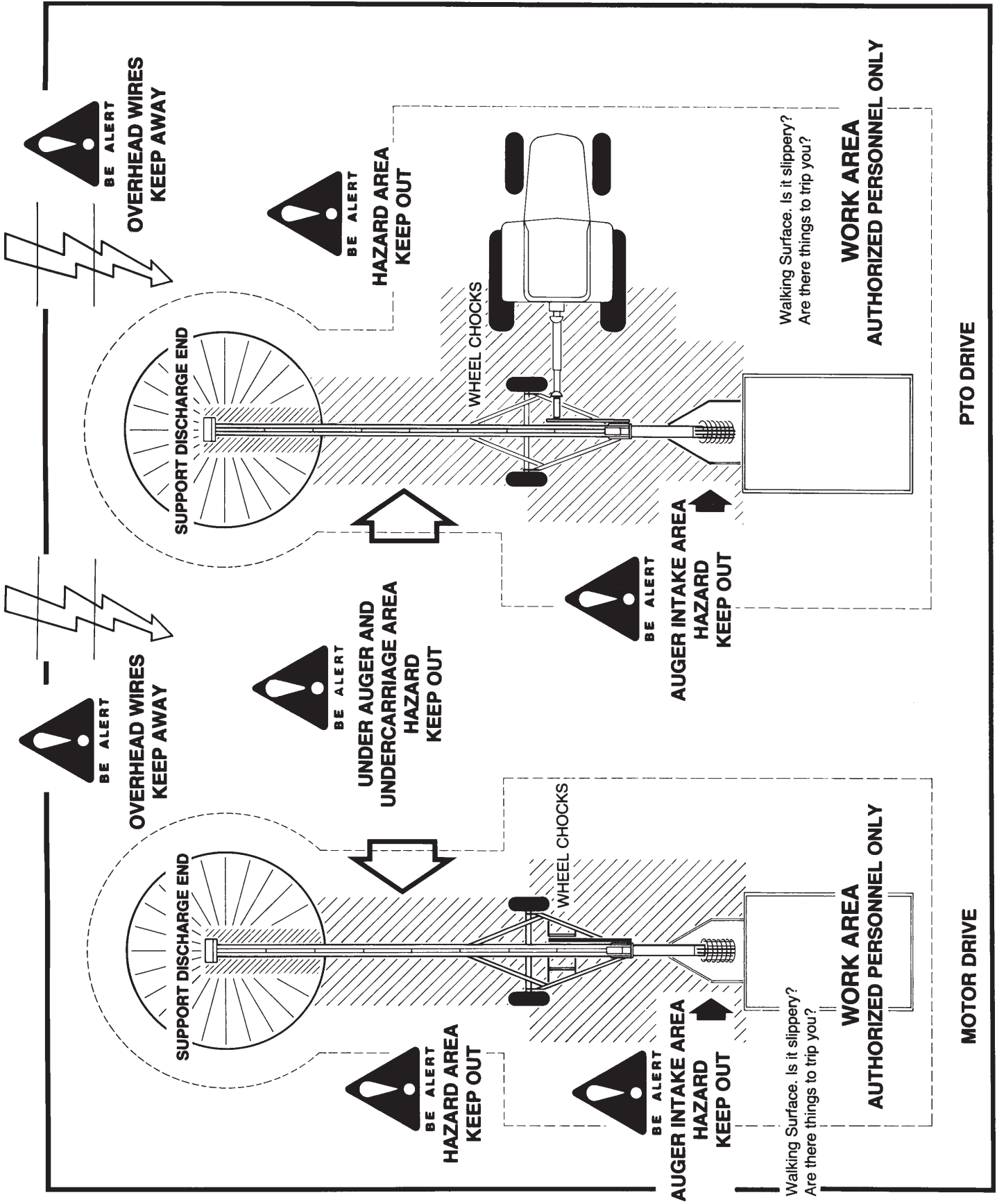


Figure No. 2.1.1 - Auger Hazard Areas

2-2. TRANSPORT AND PLACEMENT SAFETY

The approach to transport and placement safety is no different than that of operational safety. Follow the basic rules of good sense and know the limitations of your machinery. While a few of the precautions are the same, they bear repeating. Remember to:

- Keep children and unauthorized personnel away from the hazard area surrounding the auger.
- Transport auger in full down position with slight tension on cable.
- Check the lift cable before each use and replace if frayed or damaged. Also make certain the cable clamps are secure.
- Make certain that the hitch pin is in place and the safety chain is properly attached. Use a type of hitch pin that will not permit auger to separate from towing vehicle.
- Always attach a SMV (Slow Moving Vehicle) sign before transporting auger.
- Equip the auger with necessary lights for transportation where required by law.
- Before moving auger, make sure the area around the auger is clear of obstructions and/or unauthorized personnel (see **Figure No. 2.2.1**).
- Before moving auger, check and double check for overhead obstructions and/or electrical wires. Electrocutation can occur without direct contact.
- Do not transport auger faster than 15 mph (24 km/h).
- Do not transport auger on a slope greater than 20 degrees.
- Use extreme caution in turning and cornering.
- Do not raise or lower auger until the hazard area is clear.
- Do not permit anyone to stand on or beneath auger when raising or lowering.

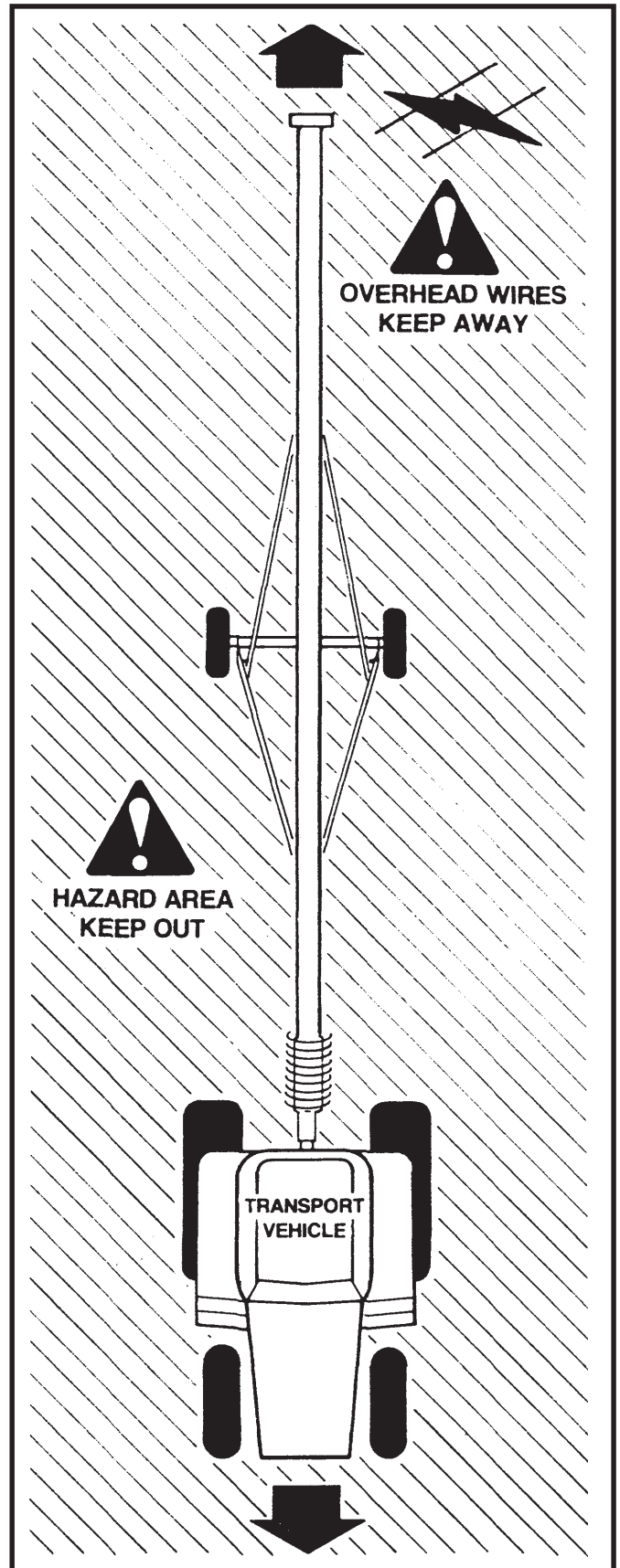


Figure No. 2.2.1

- When lowering auger, never continue to turn winch handle counter-clockwise if the cable does not keep moving out under load. This will disengage the brake mechanism and will create an unsafe condition. This condition generally indicates that the track shoe is stuck. Too much slack in the cable could allow auger to drop suddenly. To correct the problem, winch in the slack cable and correct the sticking track shoe.
- The winch must have a clicking sound when raising auger. If clicking sound stops, retain grip on handle, lower auger fully and repair winch.
- After lowering auger, turn handle clockwise two clicks to lock winch brake.
- Always keep a minimum of three cable wraps on the winch drum.
- The winch is designed for MANUAL operation only.
- Make sure that wheels are free to move when raising or lowering auger.
- Disconnect PTO driveline from tractor before moving auger or tractor (where applicable).
- Secure the PTO driveline in transport saddle before moving auger. Note that the PTO driveline is nonseparable.
- DO NOT USE AUGER AS A CRANE OR HOIST.

2-3. MAINTENANCE SAFETY

When performing maintenance on the TF-auger, understand and observe the following precautions.

- Shut down and lockout all power before attempting maintenance of any kind.
- Support auger tube before attempting maintenance on the undercarriage assembly. Where possible, auger should be in full down position.
- After maintenance is completed, replace and secure all safety shields and safety devices.
- Keep decals clean. Replace any decal that is damaged or not clearly visible.

- Use only genuine WESTFIELD replacement parts or equivalent. Replacement parts such as intake shields, pulley shields, PTO driveline shields, winches and lift cables MUST MEET ASAE STANDARDS or serious injury may result. Use of unauthorized parts will void warranty. If in doubt, contact WESTFIELD or your WESTFIELD dealer. Do not modify any auger components.

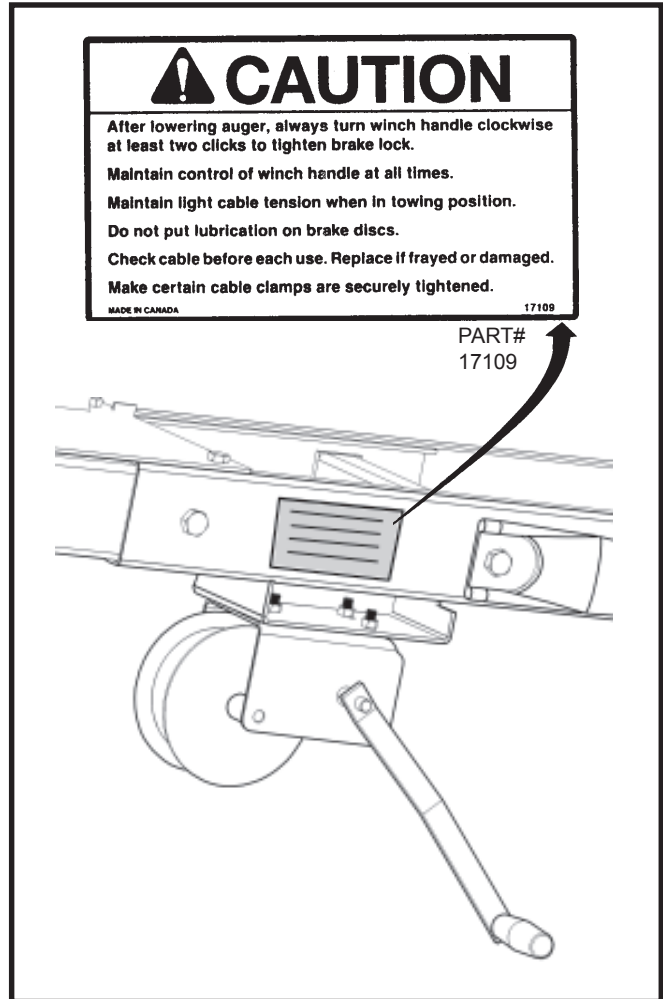


Figure No. 2.3.1- Winch Safety Decal

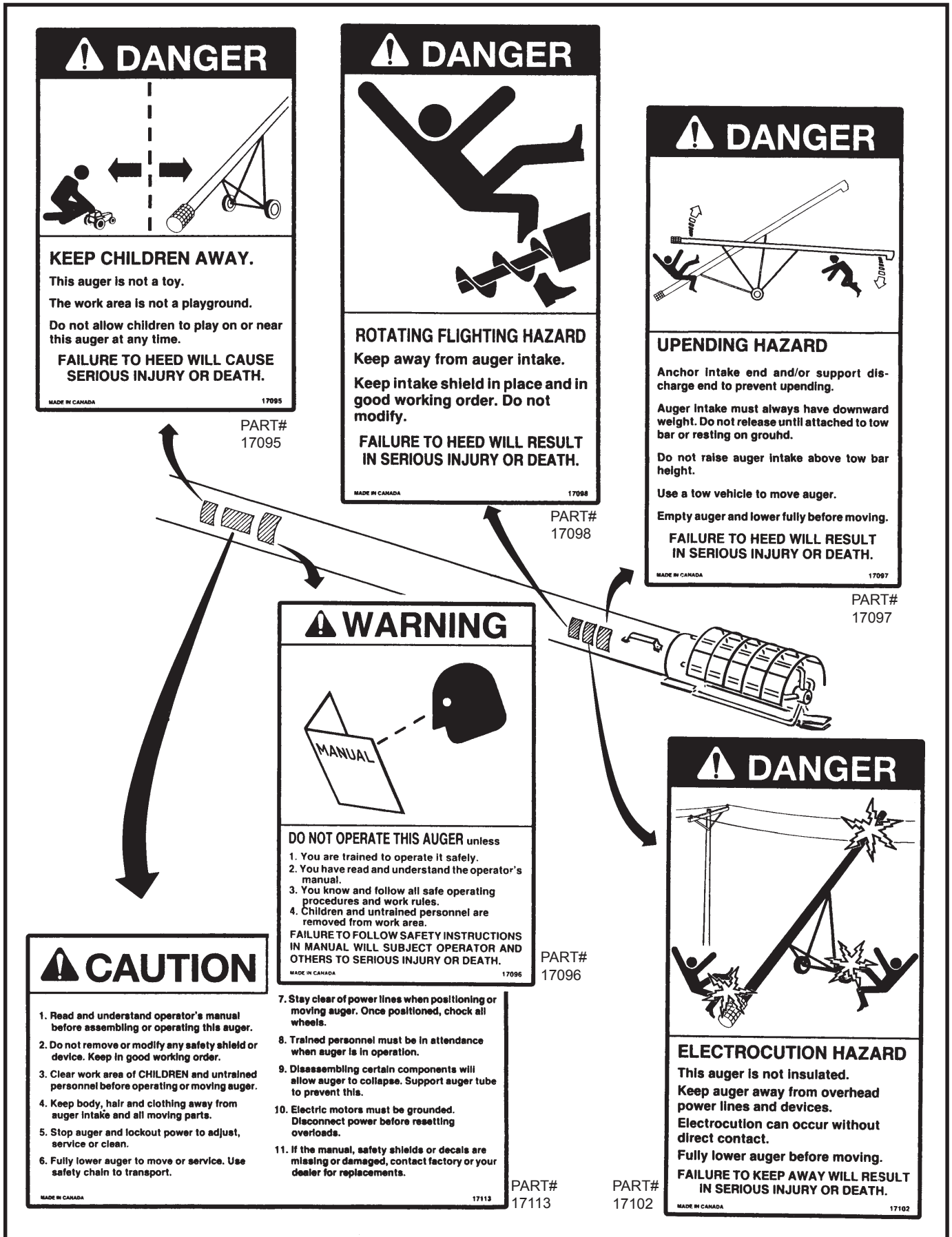


Figure No.2.3.2 - Auger Intake Tube Safety Decals

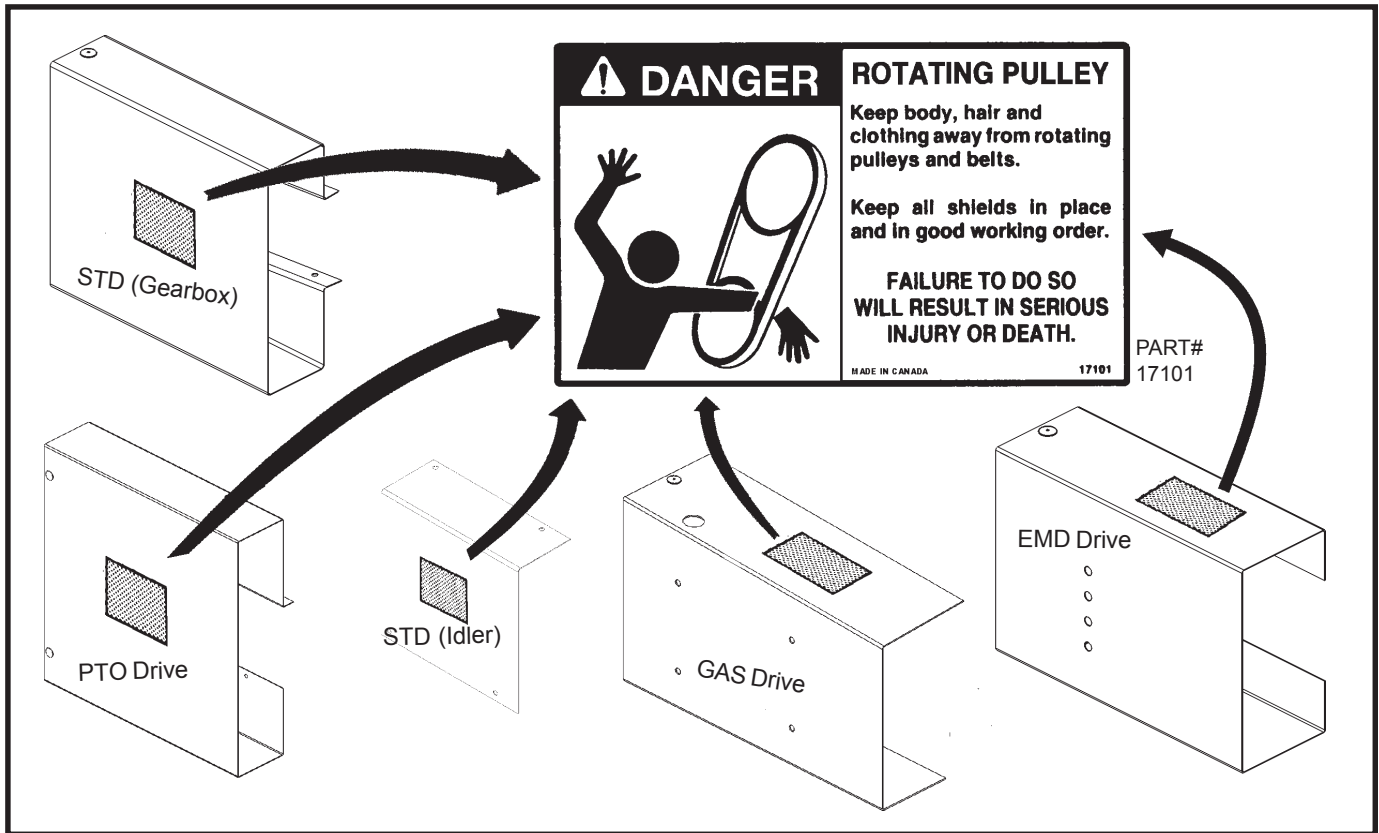


Figure No. 2.3.3 - V-Belt Guard Safety Decals

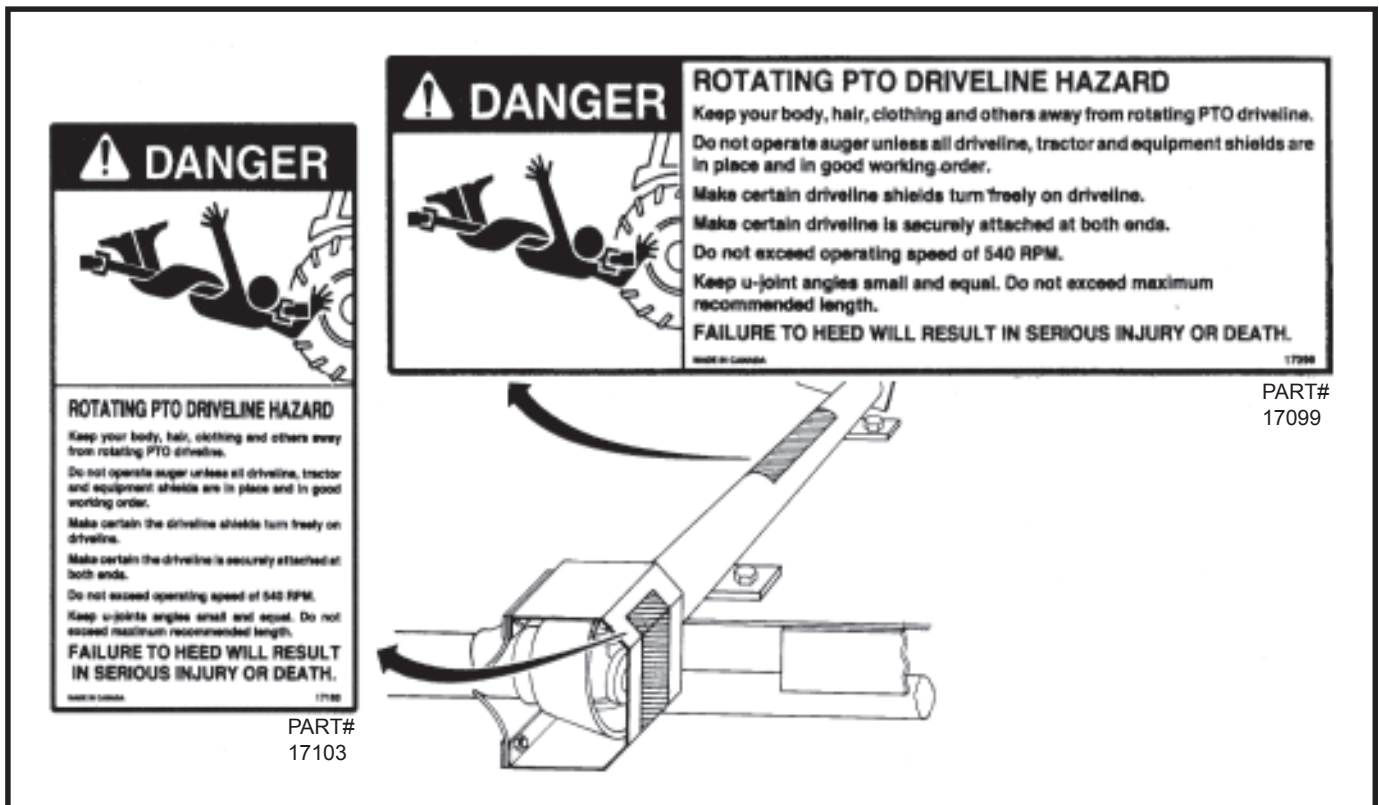


Figure No.2.3.4 - PTO Guard Safety Decals

4. Transport

When transporting the TF-auger, we strongly recommend that all safety precautions be observed, that a proper towing vehicle be used, and that transport procedures, as detailed below, be followed.

CAUTION

KEEP CHILDREN AND ALL UN-AUTHORIZED PERSONNEL AWAY.

ATTACH A SMV SIGN BEFORE TRANSPORTING AUGER.

DO NOT TOW FASTER THAN 15 MPH (24 km/h).



USE EXTREME CAUTION IN TURNING AND CORNERING.

DO NOT TOW AUGER ON SLOPES GREATER THAN 20 DEGREES.

DO NOT ALLOW PERSONS TO STAND BENEATH OR RIDE ON THE AUGER WHEN IT IS BEING TRANSPORTED. (See Figure No. 2.2.1)

4-1. PRE-TRANSPORT CHECKLIST

Before transporting auger, ensure that:

1. Auger is in full down position. The lift-arm track shoe should be seated against the down position track stop with slight tension on the lift cable.

IMPORTANT

WINCH MUST BE IN LOCKED POSITION. TO LOCK, TURN HANDLE CLOCKWISE UNTIL TWO CLICKS ARE HEARD. CHECK CABLE BEFORE EACH USE. REPLACE IF DAMAGED OR FRAYED.

2. The hitch pin and safety chain are in place and secure. The safety chain should be threaded through handle on the lower tube and wrapped around auger tube before attaching to the towing vehicle. (See **Figure No. 4.1.1**)

NOTE: We recommend that a type of hitch pin be used that will not allow auger to separate from towing vehicle.

3. Belt(s) are placed under tension for transport.
4. PTO driveline is in transport saddle and secure (PTO drive only).

NOTE: If auger wheels are partially or fully buried in snow or grain, do not attempt to move auger until snow or grain has been cleared away from auger wheels. Failure to heed may cause damage to auger and/or personal injury.

4-2. TRANSPORT PROCEDURE

When transporting auger, remember to:

1. Ensure that all unauthorized personnel are clear of transport zone. (See **Figure No. 2.2.1**)

DANGER

ELECTROCUTION HAZARD

THIS MACHINE IS NOT INSULATED. KEEP AWAY FROM OVERHEAD WIRES AND DEVICES. ELECTROCUTION CAN OCCUR WITHOUT DIRECT CONTACT.



FAILURE TO MAINTAIN PROPER CLEARANCE WILL RESULT IN SERIOUS INJURY OR DEATH.

2. Be alert to overhead obstructions and electrical wires and devices. The TF-augers have minimum clearances from 10'0" (3.05 m) to 13'0" (3.96 m), in normal transport position.
3. Observe all regulations concerning marking, towing, and maximum width.
4. Equip the auger with necessary lights where required by law.

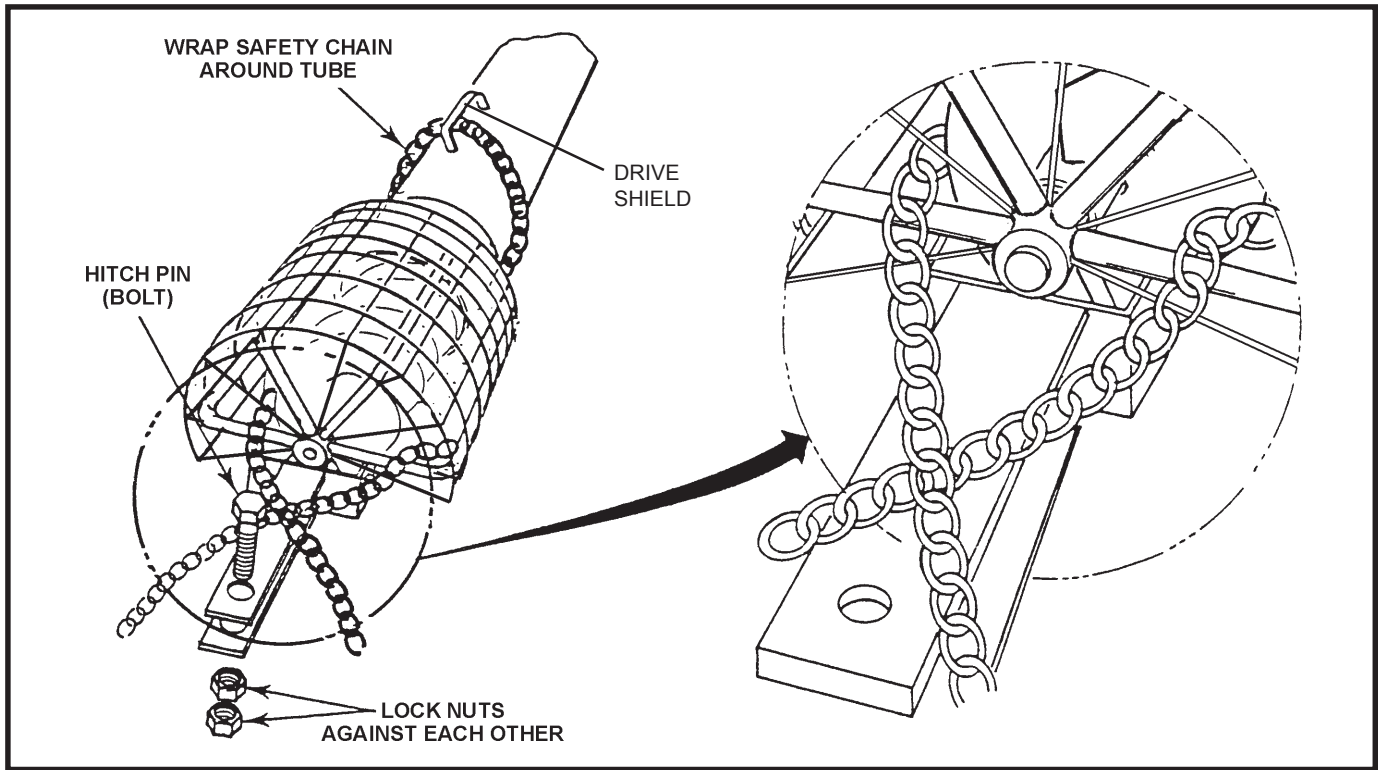



Figure No. 4.1.1

5. Do not transport auger at speeds greater than 15 mph (24 km/h).
6. Do not transport auger on slopes greater than 20 degrees.
7. Use extreme caution in turning and cornering when towing auger.

5. Placement

Before moving auger into position for operation, ensure that all safety precautions and placement procedures are observed.

CAUTION



KEEP CHILDREN AND ALL UNAUTHORIZED PERSONNEL AWAY.

ENSURE AREA IS CLEAR BEFORE RAISING OR LOWERING AUGER.

DO NOT ATTEMPT TO MOVE AUGER BY HAND.

ALWAYS CHOCK WHEELS AFTER POSITIONING AUGER FOR OPERATION.

5-1. PRE-PLACEMENT PROCEDURE

Before positioning auger, the following steps are recommended:

1. Ensure that towing hitch is in place and secure.

NOTE: We recommend that a type of hitch pin be used that will not allow auger to separate from towing vehicle. (See **Figure No. 4.1.1**)

IMPORTANT

BEFORE RAISING OR PLACEMENT OF AUGER, ENSURE THAT GROUND IS REASONABLY LEVEL. AUGER COULD TOPPLE IF GROUND IS TOO UNEVEN, DAMAGING EQUIPMENT AND/OR CAUSING PERSONAL INJURY.


2. If the auger must be raised before positioning, make sure that the entire area in the line of travel, both on the ground and overhead, is clear of any obstructions or electrical wires.

IMPORTANT

WHEELS MUST BE FREE TO MOVE WHEN RAISING OR LOWERING AUGER.

DANGER

ELECTROCUTION HAZARD



THIS MACHINE IS NOT INSULATED. KEEP AWAY FROM OVERHEAD WIRES AND DEVICES. ELECTROCUTION CAN OCCUR WITHOUT DIRECT CONTACT.

FAILURE TO MAINTAIN PROPER CLEARANCE WILL RESULT IN SERIOUS INJURY OR DEATH.


3. To raise auger, turn winch handle clockwise.

IMPORTANT

DO NOT TURN WINCH HANDLE COUNTER-CLOCKWISE EXCEPT WHEN LOWERING AUGER, OR SEVERE DAMAGE TO WINCH WILL OCCUR.

NOTE: Winch must have clicking sound when raising auger. If clicking sound stops, retain grip on handle, lower auger fully, and repair ratchet.

WARNING



NEVER ATTEMPT TO INCREASE HEIGHT OF AUGER BY POSITIONING WHEELS ON LUMBER, BLOCKS, OR BY ANY OTHER MEANS. TO DO SO WILL RESULT IN DAMAGE TO EQUIPMENT AND/OR PERSONAL INJURY.

5-2. PLACEMENT PROCEDURE

1. Move auger into working position slowly, making sure that all persons are clear of the work area (see **Figure No. 2.1.1**). Do not unhitch auger and attempt to move by hand.
2. Once auger is in position, chock wheels on both sides. Also, chock wheels on the tractor, or apply the park brake on tractor with PTO drive augers.

IMPORTANT

WHEN RELEASING AUGER FROM THE TOWING VEHICLE, TEST THE INTAKE END FOR DOWNWARD WEIGHT. DO NOT RAISE THE INTAKE END ABOVE DRAWBAR HEIGHT. WHEN THE INTAKE END IS ELEVATED TOO HIGH WITH THE AUGER IN RAISED POSITION, THE CENTER OF GRAVITY QUICKLY TRANSFERS TO THE DISCHARGE END, CAUSING THE AUGER TO UPEND.

3. When operating auger in the raised position, rest the discharge end on bin roof, or tie down to bin to prevent upending or wind upsetting auger. When operating auger in a freestanding position, anchor the intake end.

IMPORTANT

ANCHORING AND/OR SUPPORT OF AUGER DURING OPERATIONS IS NECESSARY. WHEN LOWER HALF OF AUGER EMPTIES OF GRAIN, THE WEIGHT BALANCE TRANSFERS TO UPPER END OF AUGER, WHICH CAN CAUSE UPENDING.

4. See Operations **Section 6-6** for correct lowering procedure.

NOTE: *The PTO driveline is a non-separable type. Remove from tractor and secure in transport saddle on auger before moving tractor away from auger.*

NOTE: *If auger wheels are partially or fully buried in snow or grain, do not attempt to move auger until snow or grain has been cleared away from auger wheels. Failure to heed may cause damage to auger and/or personal injury.*

WARNING



DO NOT USE AUGER AS A HOIST TO RAISE ANY OBJECT REGARDLESS OF WEIGHT. THIS WILL CREATE AN UNSAFE CONDITION AND WILL VOID WARRANTY.

6. Operation

Efficient operation of the TF-auger requires that operators follow a checklist before each start-up and demands that safety precautions be observed at all times. To do otherwise is endangering life and limb, and is a misuse of equipment.

CAUTION

KEEP CHILDREN AND ALL UN-AUTHORIZED PERSONNEL CLEAR OF WORK AREA.

DO NOT OPERATE AUGER WITH ANY SAFETY SHIELD REMOVED.



ALWAYS HAVE ANOTHER PERSON NEARBY TO SHUT DOWN AUGER IN CASE OF ACCIDENT.

KEEP BODY, HAIR, AND CLOTHING AWAY FROM ANY MOVING PARTS.

WEAR HEARING PROTECTION DURING OPERATION.

SHUT DOWN AND LOCK OUT ALL POWER BEFORE SERVICING, CLEANING, OR ADJUSTING.

6-1. PRE-OPERATION CHECKLIST

Before operating auger for the initial time, and each time thereafter, the operator must follow a prescribed checklist. The checklist should confirm the following:

- All fasteners are secured as per assembly instructions.
- All safety shields are in place and secure.
- Oil level in gearbox is adequate (half full only).

IMPORTANT

ADD EP90 LUBE OIL TO THE GEARBOX BEFORE OPERATING AUGER. FAILURE TO DO SO WILL VOID WARRANTY.

- Drive belt(s) are not frayed or damaged.
- Drive belt(s) are properly adjusted and aligned.
- Lift cable is not frayed or damaged.
- Cable clamp(s) are secure.
- Tube alignment is reasonably straight.
- Auger wheels are chocked.
- Discharge spout and intake area are free of obstructions.
- Proper maintenance has been performed.
- Operators are aware of safety precautions.
- PTO driveline is connected and secure (where applicable).
- PTO driveline shields rotate freely (where applicable).

6-2. AUGER DRIVE AND LOCKOUT

Correct operation of the TF-auger requires pre-inspection of the drive system, operator knowledge on how to shut down the system, and a general monitoring of the system during operation.

Driveline System-Electric Motor

Before starting the motor, ensure that:

1. The motor is properly grounded.
2. The belt release lever is disengaged so that the belt(s) are released from lower motor pulley.
3. The pulley shields are in place and secure.

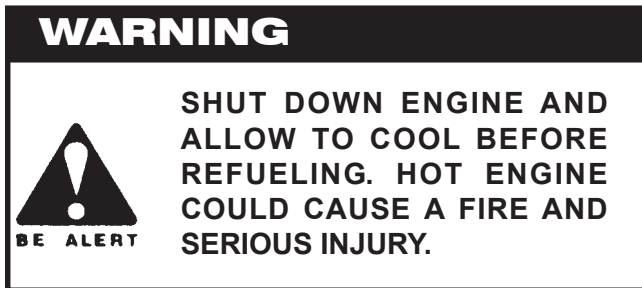
Lockout - Electric Motor

1. The electric motor should be equipped with a main power disconnect switch capable of being locked in the off-position only. The switch should be in the locked position during shutdown or whenever maintenance is performed on the auger.
2. If reset is required, disconnect all power **before** resetting motor.

Drive System - Gas Engine

Before starting engine, ensure that:

1. Gas tank is properly closed.



2. The belt release lever is disengaged so that the belt(s) are released from lower motor pulley.
3. The area surrounding auger is properly ventilated.
4. The pulley shields are in place and secure.

Lockout - Gas Engine

1. Shut down and lock out power source.
2. a. For engines with a rope or crank start, remove the spark plug wire or the spark plug.
b. For engines with an electric start, remove the ignition key, the spark plug wire, or the spark plug.

Drive System - PTO Driveline

1. Ensure that the PTO driveline is securely attached to the tractor and jackshaft.
2. Ensure tractor park brake is engaged and/or wheels are chocked
3. Do not use PTO driveline without a rotating shield in good working order.
4. Do not exceed the maximum operating length of 64 inches (1610 mm) of the PTO driveline or the maximum angularity of 15 degrees.

5. Be sure that the PTO drive on the tractor is in the off position before starting tractor.
6. Stay clear of PTO hazard area. (See **Figure No. 2.1.1**)

Lockout and/or Shutdown

1. Shut off tractor's engine.
2. Remove ignition key from tractor.
3. If step 2 is impossible, remove PTO driveline from tractor.

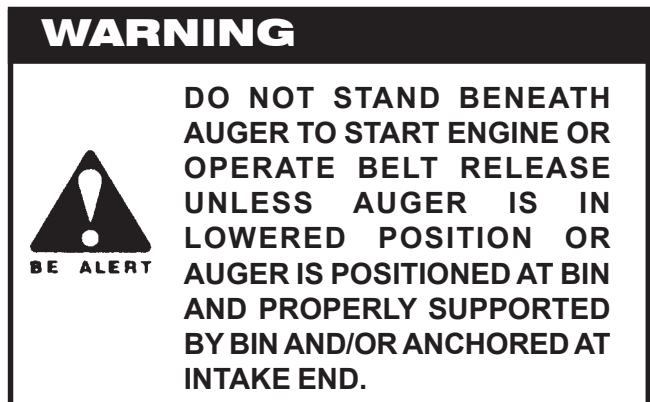
6-3. START-UP AND BREAK-IN

Start-up and break-in procedures for the TF-auger are as follows:

1. Ensure that you have completed checklist in **Section 6-1**.
2. If everything is satisfactory, prepare for a 30 minute operation at half speed, augering grain.
3. Ensure that portable grain hopper is correctly positioned and secured to auger with both straps (where applicable).

IMPORTANT

ANCHORING AND/OR SUPPORT OF AUGER DURING OPERATIONS IS NECESSARY. WHEN LOWER HALF OF AUGER EMPTIES OF GRAIN, THE WEIGHT BALANCE TRANSFERS TO THE UPPER END OF AUGER, WHICH CAN CAUSE UPENDING.



4. Start tractor and engage PTO driveline, then feed grain to auger. If auger functions normally, check at varying speeds for a period of 30 minutes.

IMPORTANT

WHEN STARTING AUGER FOR THE FIRST TIME, BE PREPARED FOR AN EMERGENCY SHUTDOWN IN CASE OF EXCESSIVE VIBRATION OR NOISE. NOTE THAT AUGER MAY RUN ROUGH UNTIL TUBE IS POLISHED.

5. Upon completion of initial run, slow down auger until empty, and stop.

NOTE: *The flighting RPM on augers equipped with electric motors is not adjustable. To clear auger of grain, decrease the grain flow until auger is clear, disengage belt release and stop.*

6. Lock out tractor and conduct a complete inspection of auger, following the checklist in **Section 6-1**.
7. After the initial start-up and inspection, the auger should be shut down and inspected at least three times during the first 10 hours of operation.
8. Do not run empty auger at high speeds, as this results in excessive wear.
9. Once auger is broken in, the checklist should be a part of the daily routine before operating auger.

6-4. FULL LOAD PROCEDURES

For normal auger operations, the following procedures and safety precautions are strongly recommended.

1. When operating the auger, always work with a second person in a position to monitor the operation and initiate a shutdown in case of emergency.
2. Monitor the auger during the actual operation for abnormal noises or vibrations.
3. Observe the work area restrictions (see **Figure No. 2.1.1**). If unauthorized personnel enter the hazard zone, shut down the auger and clear the area before restarting.
4. Shut off all power before making adjustments, servicing, or clearing the machine.

6-5. NORMAL/EMERGENCY SHUTDOWN

The steps for a normal shutdown are as follows:

1. Near the end of a load, reduce the feed of grain and decrease auger speed where possible, until auger is clear of all grain.
2. When auger is clear, disengage belt release and stop engine/motor, disengage PTO.
3. Shut down and lock out power source.

In the event of an intermittent or emergency shutdown, restart as follows:

1. If auger is full of grain, do not restart at full speed. Engage the belt release gradually until normal operating speed is reached.

IMPORTANT

STARTING AUGER UNDER FULL LOAD MAY RESULT IN DAMAGE TO THE UNIT. BE SURE THERE IS NO BLOCKAGE.

2. If the auger is shut down for an emergency, lock out tractor before correcting problem. If the problem is clogging, clear as much of the grain as possible before restarting unit. (See **Section 6-2** for lockout procedures)

6-6. COMPLETION/CLEAN-UP

At the completion of an operation, the auger should be moved to the next work area or to a storage area. The recommended procedure is:

1. Clean entire work area.
2. Remove all wheels chocks.
3. After ensuring that area is clear of all unauthorized personnel, move auger out of working position and lower fully.
4. Prepare for transport and placement or storage. (See Transport **Section 4** and Placement Section 5 for correct procedure. If storing auger, see Maintenance & Storage **Section 7** for storage procedures).

IMPORTANT

THERE WILL BE NO CLICKING SOUND WHEN LOWERING AUGER. AFTER LOWERING AUGER, TURN HANDLE CLOCKWISE UNTIL YOU HEAR TWO CLICKS TO LOCK BRAKE.

CAUTION

DO NOT LEAVE AUGER IN RAISED POSITION WHEN NOT IN USE. AUGER COULD DROP RAPIDLY IN CASE OF CABLE BREAK. HIGH WINDS MAY ALSO UPSET AUGER.



WHEN LOWERING AUGER, NEVER CONTINUE TO TURN HANDLE COUNTERCLOCKWISE IF THE CABLE DOES NOT KEEP MOVING OUT UNDER LOAD. THIS WILL DISENGAGE THE BRAKE MECHANISM AND CREATE AN UNSAFE CONDITION. WHEN THIS OCCURS, WINCH IN SLACK CABLE AND CORRECT PROBLEM.

HORSEPOWER REQUIREMENTS


* With dry grain. High moisture grain will require more horsepower.

	8"		10"	
	GAS	ELEC	GAS	ELEC
31'	16	5	20	7.5-10
36'	16	5-7.5	20-25	10
41'	16	5-7.5	20-25	10-15
46'	18	7.5		
51'	18	7.5		

7. Maintenance and Storage

Proper maintenance habits on the TF-auger mean a longer life for the machine, and a more efficient and safe operation.

CAUTION



BE ALERT

KEEP CHILDREN AWAY WHEN PERFORMING MAINTENANCE.

BEFORE PERFORMING ANY MAINTENANCE, ENSURE THAT POWER IS SHUT DOWN AND LOCKED OUT.

WHERE POSSIBLE, PERFORM MAINTENANCE WITH AUGER IN FULL DOWN POSITION.

REPLACE ALL SHIELDS AFTER MAINTENANCE.

7-1 GENERAL MAINTENANCE PROCEDURES

We recommend the following steps for the general maintenance of this auger.

1. Observe the checklist in **Section 6-1** on a daily basis when auger is in use.
2. Check all operating, lifting and transport components. Replace damaged or worn parts before using auger.

NOTE: To replace a damaged part, refer to Assembly Instructions in **Section 3**.

3. **Upper Chain Drive:** Fill enclosed upper drive housing with grease.

TF80	750 grams	26 oz
TF100	1100 grams	40 oz

For continuous use in extreme cold conditions, semi fluid arctic grease or heavy oil may be used.

IMPORTANT

LUBRICATE BELT RELEASE AND MOTOR MOUNT SLIDERS WITH SILICONE OR LIGHT OIL.

4. **Intake Bushing:** Grease daily.

5. **Gearbox:** Maintain oil level at half full (center of cross shaft). Gearbox should be level when checking or refilling. DO NOT OVERFILL.

IMPORTANT

ADD EP90 LUBE OIL TO THE GEARBOX BEFORE OPERATING AUGER. FAILURE TO DO SO WILL VOID WARRANTY.

6. **Drive belts:** check and replace if frayed or damaged. Ensure that tension is correct under load.

NOTE: The correct operating tension is the lowest tension at which the belts will not slip under peak load conditions.

7. **Cable Pulley:** Oil from time to time as needed.
8. **Winch:** Keep film of grease on gears. Occasionally oil the bushings, drumshaft and ratchet. Take care not to get oil or grease on brake discs. Replace brake discs if less than 1/16" thick. Service winch with auger in fully lowered position and cable slack.
9. **Lift Cable:** Check and replace if frayed or damaged. Make certain that cable clamps are secure. See **page 17** for correct mounting of cable clamps.
10. **Truss Cables:** On augers so equipped, adjust as needed to keep auger tube reasonably straight.
11. **Wheel Hubs:** Repack every two or three years with lithium based grease.
12. **Tire Pressure:** Check with a pressure gauge monthly or when tire pressure seems low. We recommend that pressure be maintained at 18-24 psi (124-165 kPa).
13. **PTO Driveline:** Check shield and replace if damaged. Lubricate both universal joints after every 8 hours of operation. Lubricate the center portion of driveline (grease fitting is beneath shield) on a yearly basis (where applicable).

14. **Belt Release:** Keep film of silicone lubricant on motor mount pipes and sliding end of push bar for easier release of belt tension.

15. **Drive shaft bearings:** To replace drive shaft bearings remove flange bolts, split one-piece wood bearing with chisel, then replace with new two-piece wood bearing and replace flanges.

16. To change belts:

Shut off and lock out power.

For LOWER belts (jackshaft to engine, motor, or PTO):

For GAS ENGINE DRIVE:

1. Remove jackshaft pulley guard.
2. Remove engine pulley guard, if necessary.
3. Disengage belt tensioner handle on belt tension tube to loosen belts.
4. Remove old belts and replace. (see **Section 3** for proper size).
5. Engage belt tensioner handle to tighten belts.
6. Replace guards.

For Electric Motor and PTO DRIVE:

1. Remove jackshaft pulley guard.
2. Remove motor/PTO pulley guard.
3. Unlock nut and loosen tensioner bolt on motor/PTO mount base.
4. Remove old belts and replace. (see **Section 3** for proper size).
5. Tighten tensioner bolt on motor mount base and turn nut to lock in place.
6. Replace guards.

For UPPER belts (jackshaft to gearbox):

To change upper belts, the lower belts must be loosened. Disengage belt tensioner or remove bottom belts.

1. Remove gearbox pulley guard and jackshaft pulley guard.
2. Turn tensioner bolt on jackshaft assembly to loosen belts.
3. Loosen 4 bolts on base of jackshaft assembly.
4. Remove and replace belts (see **Section 3** for proper size).


5. Once belts are installed, slide the jackshaft assembly as far as possible by hand towards the discharge end of the auger. Tighten 4 bolts on base.
6. Tighten tensioner bolt to tighten belts. Lock in place with nut.
7. Replace pulley guards.
8. Tension lower belts. The belt tensioner may need re-adjustment. See **Section 3** for details.

7-2. GENERAL STORAGE PROCEDURES

To protect auger in storage during the off season, we suggest the following:

1. Lower the auger to the full down position with a slight tension on cable.
2. Lubricate all grease fittings per maintenance procedures.
3. Inspect auger for damage and note any repairs required. Order replacement parts from your dealer.
4. Check tire pressure and inflate to 24 psi (165 kPa).
5. Remove battery (where applicable) and store in a cool, dry place. Recharge periodically as required.

DANGER



EXERCISE CAUTION WHEN HANDLING BATTERIES. THEY CONTAIN ACID WHICH CAN EAT THROUGH CLOTHING, BURN SKIN, AND CAUSE BLINDNESS.


BE ALERT

6. Drain gas tank (where applicable).
7. Cover engine/motor with plastic to protect from weather (where applicable).
8. Tow auger to storage area. Park and chock wheels.
9. Clean and lightly lubricate the spline on PTO driveline. (where applicable)

To prepare auger for use after storage, we recommend the following:

1. Check tire pressure and inflate to 18-24 psi (124-165 kPa) if necessary.

DANGER



WATCH FOR OVERHEAD ELECTRICAL WIRES. ELECTROCUTION CAN OCCUR WITHOUT DIRECT CONTACT. FAILURE TO HEED THIS WARNING WILL RESULT IN SERIOUS INJURY OR DEATH.

BE ALERT

2. Tow auger to worksite, being mindful of electrical wires overhead. (See **Section 4** for correct procedures.)
3. Check oil level in gearbox and refill if needed, half full only. **DO NOT OVERFILL.**
4. On augers equipped with lubricated upper drive, check level of lubrication annually and add as needed. Refill to plug level.

CAUTION



SUPPORT DISCHARGE END OF AUGER BEFORE REMOVING OR REPLACING ANY PARTS ON THE UNDERCARRIAGE.

5. Replace battery in holder (where applicable).
6. Replace any damaged parts.
7. Conduct general maintenance procedures before using auger.
8. When recharging battery, follow the correct procedure as indicated in the battery manual.

Use only genuine WESTFIELD replacement parts or equivalent. Replacement parts such as intake shields, pulley shields, PTO driveline shields, winches and lift cables **MUST MEET ASAE STANDARDS** or serious injury may result. Use of unauthorized parts will void warranty. If in doubt, contact WESTFIELD or your WESTFIELD dealer. Do not modify any auger components.

8. Index

Angle Iron Track Stop	9	Completion/Clean-up	40
Assembly	8	Full Load Procedures	40
Belt Alignment, Motor Drive	20	Normal/Emergency Shutdown	40
Drive, engine, motor and PTO	22/28/30	Safety	2
Driveshaft	10	Start-up and Break-in	39
Driveshaft Sequence - Table I	10	Placement	36
Drive Shielding	11	Safety	4
Drive Shielding Sequence - Table II	11	Roller Trackshoe	9
Flighting	8	Safety First	2
Gearbox	11	Decals	5, 6, 7
Intake Hitch	10	Maintenance	5
Lift Cable	18	Operational	2
Pulleys	20	Placement	4
Pulley Requirements - Table III	20	Transport	4
Pulley Shields	21/26/27/29/31	Transport Hazard Zone	4
Tires	15	Work Area Hazard Zone	3
Track / Track Shoe	9	Sign-off Form	Inside Front
Trussing	13	Start-up & Break-in	39
Tube	8	Storage, Maintenance	42
Undercarriage	14	Storage Procedures	44
Wheels	15	Table of Contents	iii
Winch	17	Transport	34
Winch Handle	19	Hazard Zone	4
Auger Drive & Lockout	38	Safety	4
Battery Holder	27	Warranty	Inside Rear
Belt Tensioner	24	Work Area Hazard Zone	3
Checklist - Pre-Operational	38		
Completion/Clean-up	40		
Contents, Table of	iii		
Emergency Shutdown	40		
Full Load Procedure - Operational	40		
Introduction	1		
Jackshaft	19		
Lockout, Auger Drive	37/38		
Maintenance & Storage	42		
Belts, How to Change	43		
Maintenance Procedures	42		
Safety	2		
Storage Procedures	44		
Normal Shutdown.....	40		
Operation	38		
Auger Drive & Lockout	38/39		
Checklist	38		



WARRANTY

Westfield Industries Ltd. warrants products of its manufacture against defects in materials or workmanship under normal and reasonable use for a period of one year after date of delivery to the original purchaser.

Our obligation under this warranty is limited to repairing, replacing, or refunding defective part or parts which shall be returned to a distributor or a dealer of our Company, or to our factory, with transportation charges prepaid. This warranty does not obligate Westfield Industries Ltd. to bear the cost of labor in replacing defective parts. Any defects must be reported to the Company before the end of the one year period.

This warranty shall not apply to equipment which has been altered, improperly assembled, improperly maintained, or improperly repaired so as to adversely affect its performance. Westfield Industries Ltd. makes no express warranty of any character with respect to parts not of its manufacture.

The foregoing is in lieu of all other warranties, expressed or implied, including any warranties that extend beyond the description of the product, and the IMPLIED WARRANTY of MERCHANTABILITY is expressly excluded.

WESTFIELD INDUSTRIES LTD.
ROSENORT, MANITOBA
CANADA
ROG 1WO

WESTFIELD[®]

INDUSTRIES

a Division of Ag Growth Industries Limited Partnership

**ROSENORT, MANITOBA, CANADA
R0G 1W0**

(204) 746-2396

visit us at: www.grainaugers.com
e-mail us at: admin@westfieldindustries.com